



INTEROPERABLE SATELLITE RADIO WIRELESS SYSTEM

EXTREME CAUTION SHOULD BE TAKEN WHEN MOUNTING THESE COMPONENTS TO THE BUILDING. AVOID POWER LINES & FOLLOW ALL LOCAL INSTALLATION CODES FOR INSTALLING THIS TYPE OF EQUIPMENT.

KIT INCLUDES:

Item Description

1. INTEROPERABLE AMPLIFIED ANTENNA ON A BRACKET (CP-03264)
2. J-POLE, VAPOR WRAP, 2 TIE WRAPS, & U-BOLT. (CP-03265)
3. TWO - 100' RG-58 TYPE CABLE (CP-03247)
4. 39 dB IN-LINE AMPLIFIER (CP-03243)
5. 41 dB IN-LINE AMPLIFIER with AC/DC power pack (CP-03284)

6. 6" JUMPER CABLE ASSEMBLY
7. BAND PASS FILTER
8. 30' RF-195 TYPE CABLE
9. PASSIVE INDOOR ANTENNA (CP-03267)

Parts needed; that are **not supplied**.

- Six 5/16 X 3" lag screws to mount pole to building
- Six 5/16" washers
- Hardware to properly ground the system.
- Addition straps to support cable along beams.

- CAUTION:**
- 1) Do not cut the supplied cables nor increase cable length by inserting additional cable sections. Adjusting the length of any of the cables will degrade signal performance.
 - 2) Maximize separation between Interoperable Amplified Antenna and Passive Indoor Antenna.
 - 3) Completely uncoil both 100' cable assemblies and route them by opening to their full extended length. Do not leave unused cable coiled near the In-line Amplifiers.
 - 4) Verify that the In-line Amplifiers are spaced by a minimum physical separation of 30'.

INSTALLATION INSTRUCTIONS:

1. Attach the antenna and mount to the J-pole using the supplied U-bolt, as shown below in Figure 1. Attach the J-pole to the top or side of the building and secure as necessary. Make certain that the Interoperable Amplified Antenna (Item 1) is horizontal and has an unobstructed hemispherical view from the horizon upward to zenith in all directions.
2. Attach one of the 100' cables (Item 3) to the Interoperable Amplified Antenna and wrap this connection with the supplied vapor wrap. Attach the cable to the J-pole and secure it with the supplied tie-wraps.
3. Route the cable through the building and towards the Passive Antenna and receivers.
4. Attach the non-labeled port of the In-line Amplifier (Item 4) to the 100' cable. Verify proper amplifier direction. The port labeled "**OUT TO RECEIVER**" should remain open and ready for the next cable attachment.
5. Connect the second 100' cable to the in-line amplifier port labeled "**OUT TO RECEIVER**". Route the cable towards the location of the Passive Antenna and receivers.
6. Connect the opposite end of the second 100' cable to the non-labeled port on the AC/DC powered In-line Amplifier (Item 5). Verify that the port labeled "**OUT TO RECEIVER**" remains open for the next cable attachment.



INTEROPERABLE SATELLITE RADIO WIRELESS SYSTEM

7. Using the 6" Jumper Cable (Item 6), connect the input of the Band Pass Filter (Item 7) to the amplifier port labeled "OUT TO RECEIVER".
8. Connect the 30' cable (Item 8) to the output of the Band Pass Filter. Route the 30' cable towards the receiver and where the Passive Antenna (Item 9) will be placed.
9. Connect the Passive Antenna to a wall or beam using the integrated bracket included with the antenna. Point the antenna down towards the receivers. Attach the 30' cable to the antenna. Follow the guidelines in Table 1 for optimum performance.

Dist. To Receivers (Feet)	Horizontal Coverage (Feet)	Vertical Coverage (Feet)
20 Min.	30	20
40	60	50
80	100	90
150	200	170

Table 1.

10. Connect the AC/DC power pack attached to the in-line amplifier (Item 5) into a standard 120VAC receptacle.

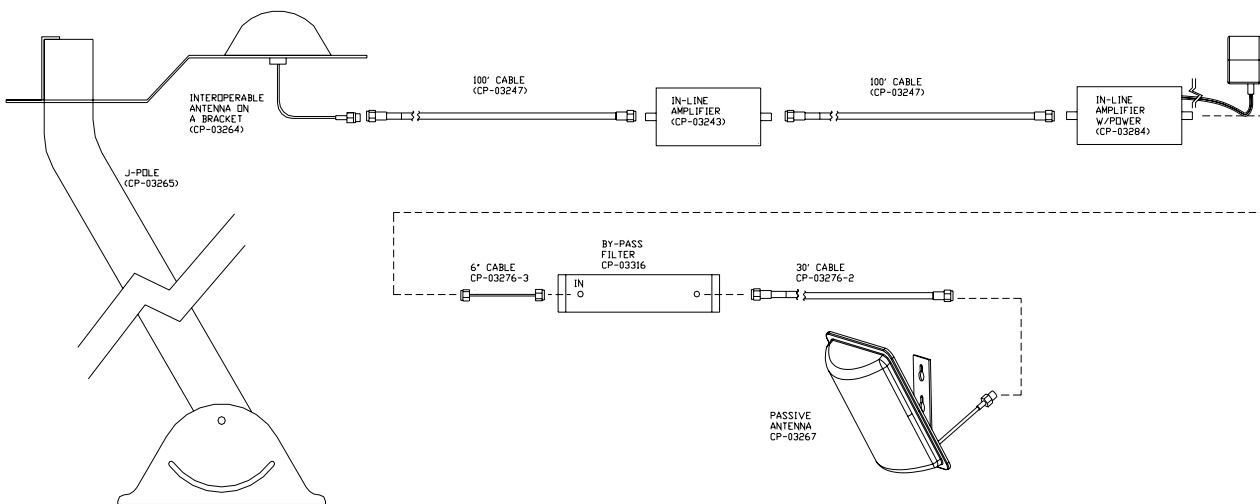


Figure 1.